

Figure 1 – Habitats of Ho Sheung Heung and Long Valley (NENT EIA)

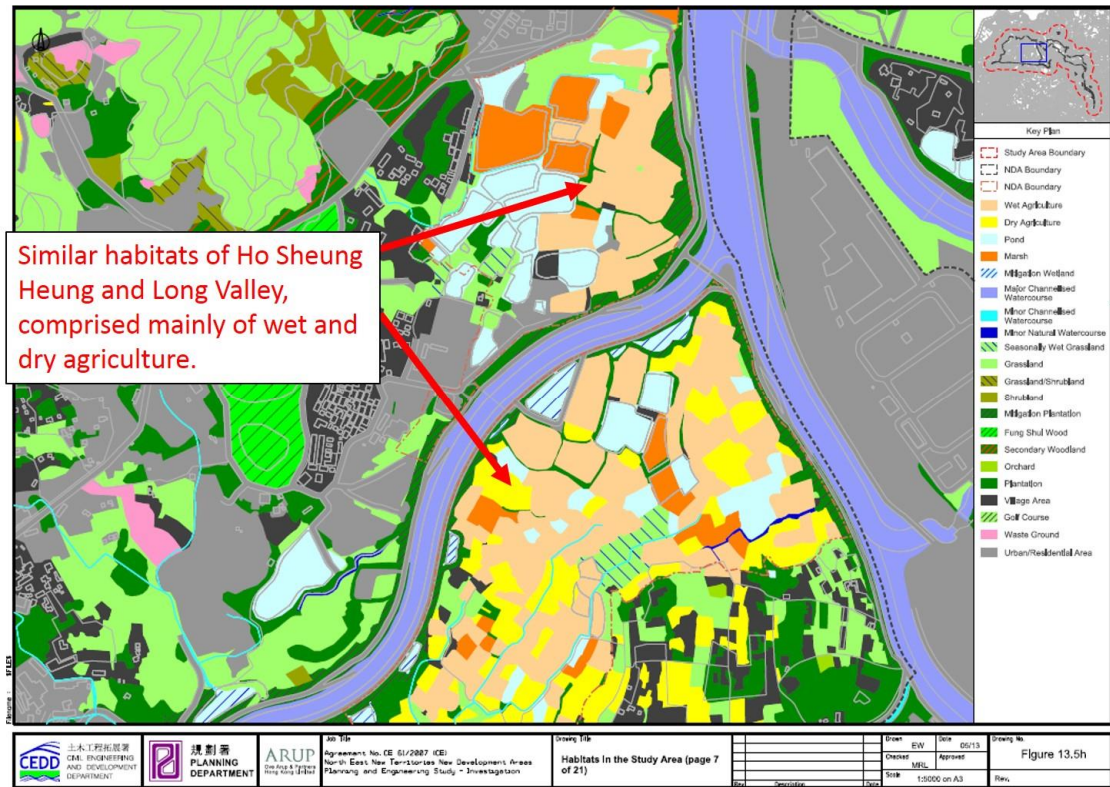


Figure 2 – Priority site of the New Nature Conservation Policy

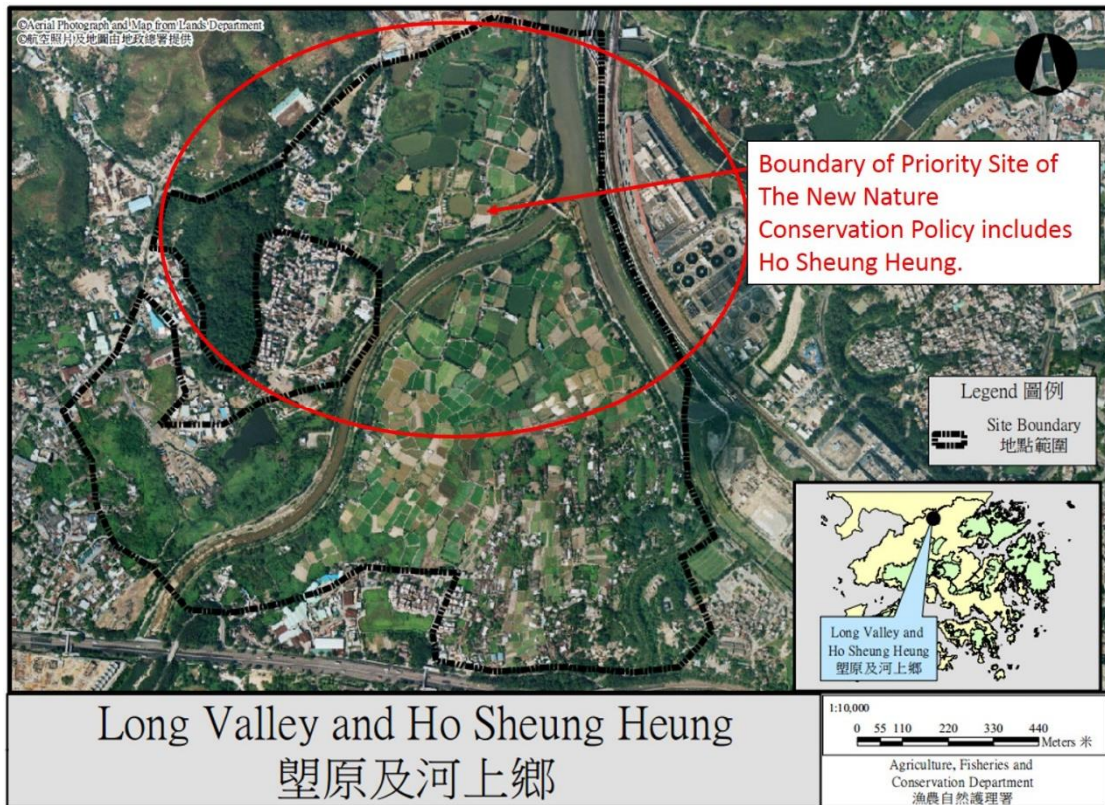


Figure 3 – Inner Deep Bay and Shenzhen River Catchment Important Bird Area

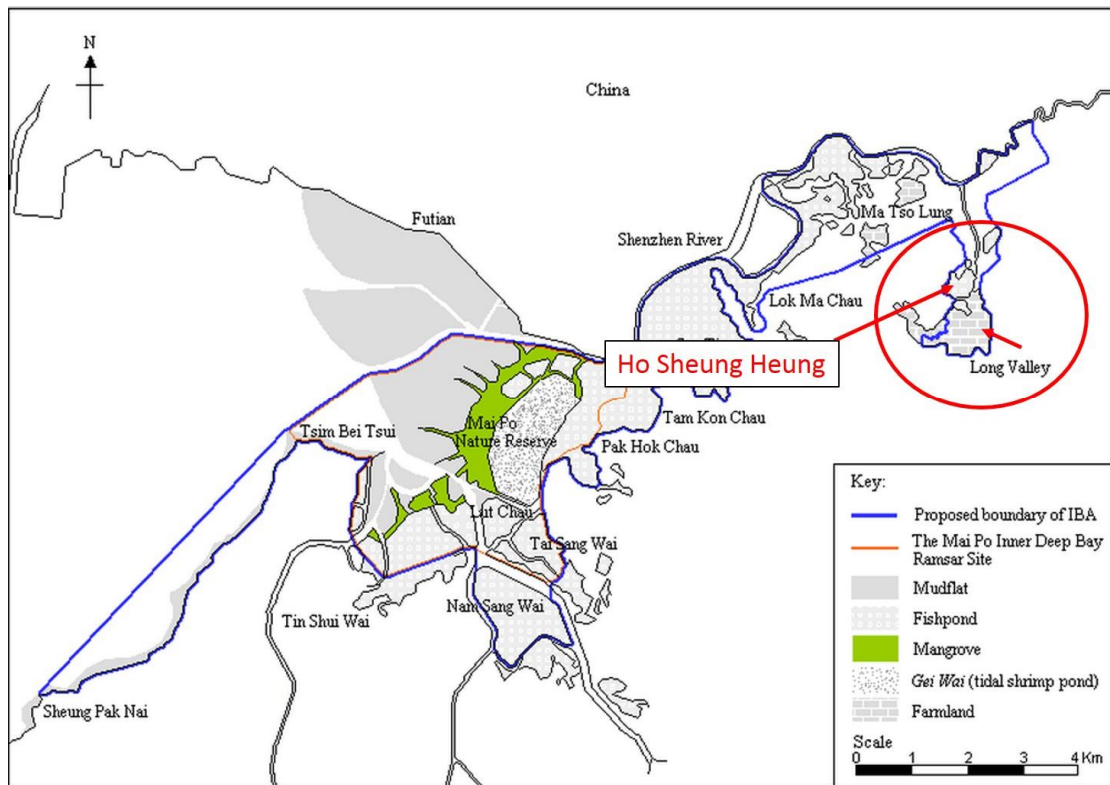


Figure 4 – Yellow-breasted Bunting and Black-faced Spoonbill



Figure 5 – Flight paths of Ho Sheung Heung Egret (NENT EIA)

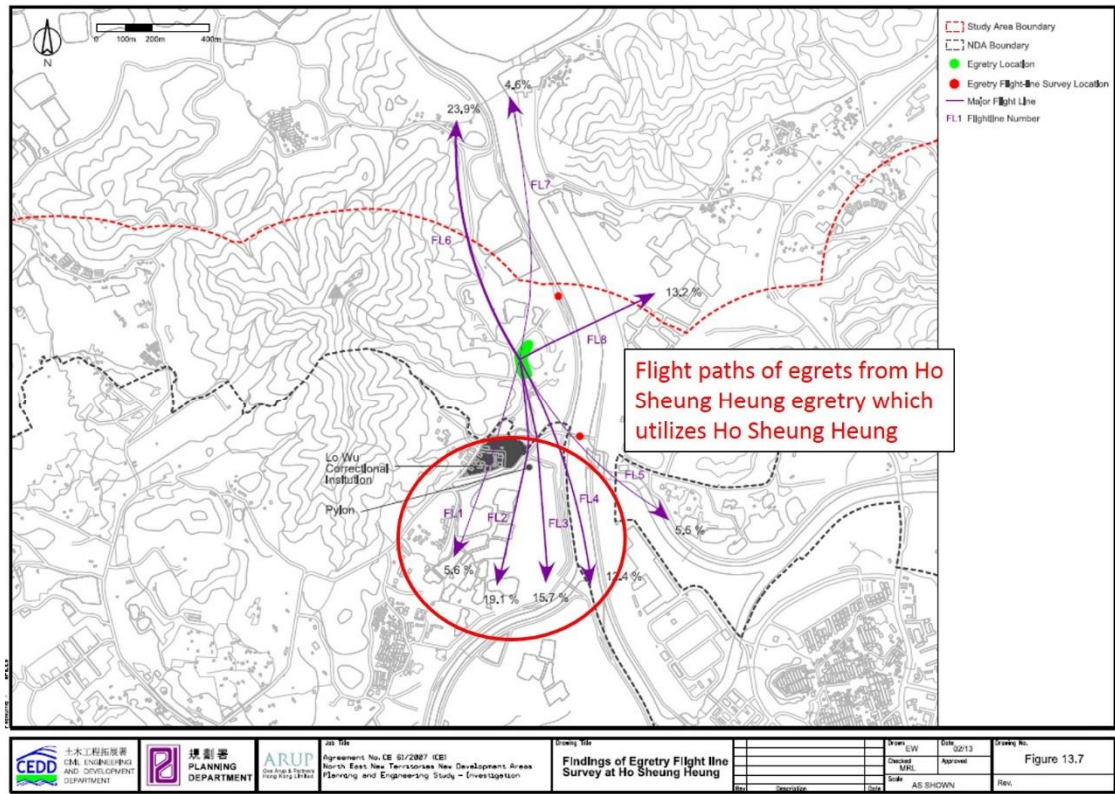


Figure 6 – Habitats of planning areas 31, 32, 33 and 34 (NENT EIA)

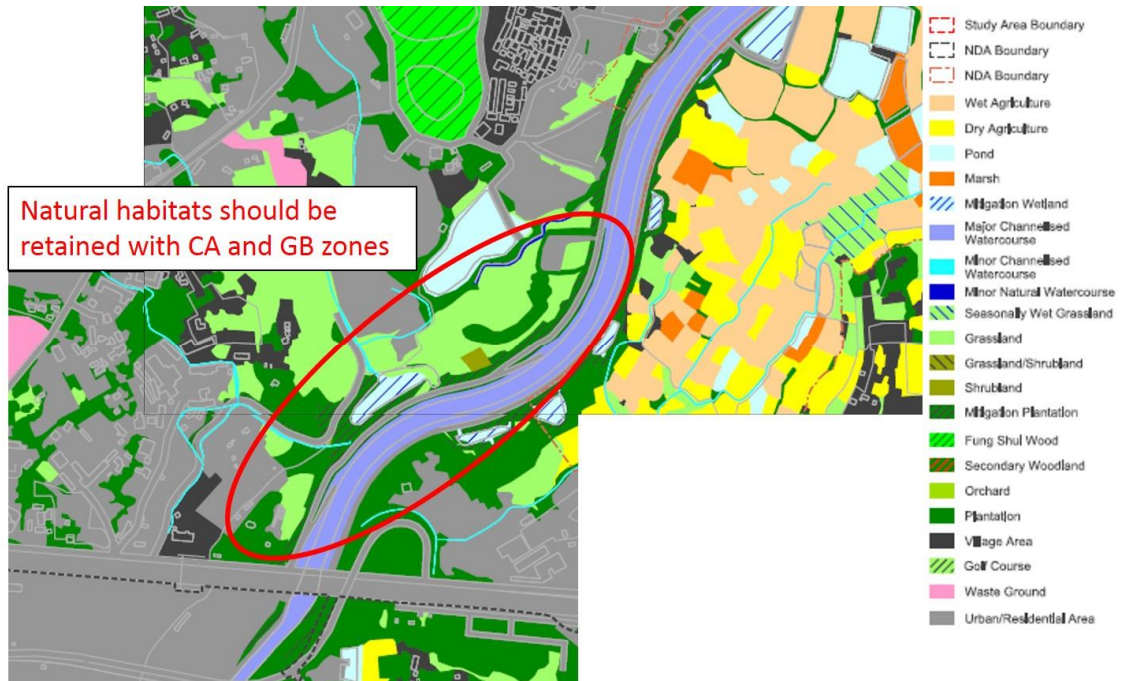


Figure 7 – Proposed zonings for Kwu Tung North Draft OZP

