

The more information you give, the more the **iNaturalist** community can help to identify your pictures. Here are a few tips!

PHOTOGRAPHS:

Take many pictures of the same specimen.

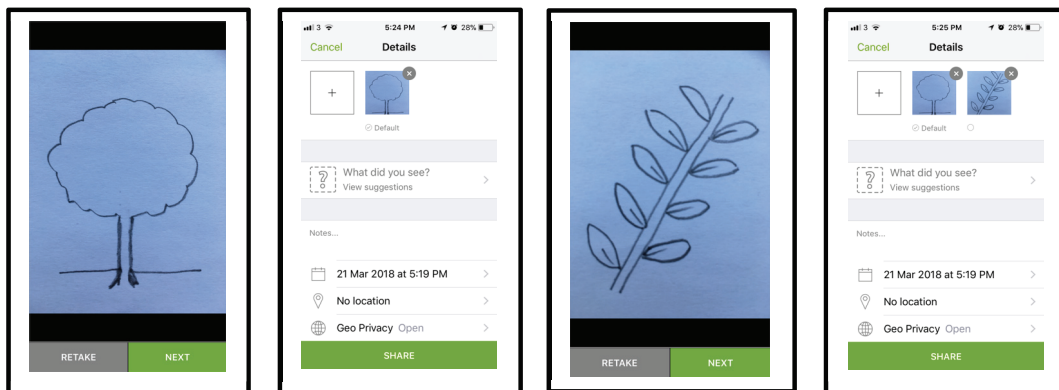
1. Try taking pictures from different angles or of interesting features.



2. For **trees**, pictures of the crown, sub-branch, leaf and bark can really help with identification.

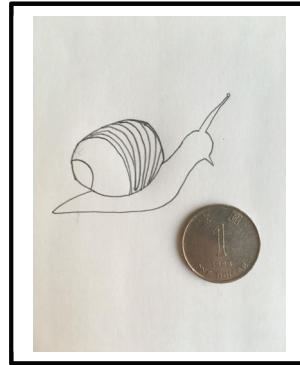
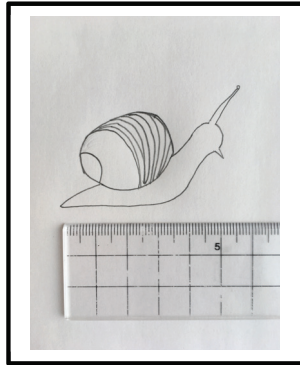


3. After you have taken your first picture, tap **next**. At the top of the screen, tap the **+** icon to either take another one or choose from your library. It's easy!



PHOTOGRAPHS: Indicate scale.

This is not always possible but try to add something into the picture that would make it easy to distinguish size, e.g. a coin or ruler.



IDENTIFICATION: Naming Tips.

if you do not know EXACTLY what they photograph is showing, you can always type what you know for sure, e.g. bird, butterfly, beetle. iNaturalist may 'translate' what you type into Latin. The below may help you with your description.

General Identification

Plants	(e.g. Trees, Plants, Ferns)
Fungi	(e.g. Mushrooms, Lichens)
Birds	(e.g. Sparrow, Eagle, Hawk, Dove)
Amphibian	(e.g. Frog, Toad, Salamander)
Reptile	(e.g. Lizard, Gekko, Skink, Turtle)
Mammal	(e.g. Monkey, Water Buffalo, Dolphin)
Insect	(e.g. Dragonfly, Butterfly, Mosquito)
Arachnids	(e.g. Spider, Scorpion, Tick)
Crustaceans	(e.g. Crab, Shrimp, Barnacle)
Molluscs	(e.g. Snail, Slug, Squid)
Corals	(e.g. Coral and Sea Anenomes)

Kingdom – Plantae
Kingdom - Fungi
Class – Aves
Class – Amphibia
Class – Reptilia
Class – Mammalia
Class – Insecta
Class – Arachnida
Subphylum – Crustacea
Phylum – Mollusca
Class - Anthozoa

Specific identification

Flowering Plants	(e.g. Orchids, Oak, Ivy)
Beetle	
Butterfly/Moth	
Dragonfly	
Fly/Mosquito	
Wasp/Bee/Ant	

Phylum – Magnoliophyta
Order – Coleoptera
Order – Lepidoptera
Order – Odonata
Order – Diptera
Order – Hymenoptera